

Bikappa

Designed by Bartoli Studio

More than minimalist, with an almost two-dimensional look, the Bikappa chair fills space with its elegant and light shape. Its back and seat are formed from a single sheet of injection-moulded polypropylene in three basic colours: white, black or red. Its sides form its structure in polished pressure die-cast aluminium, with a striking colour contrast, or in the same colour as the back and seat, for those who want a totally minimalist effect.

Metal finish:

Polished aluminium

Aluminium with lacquer in a colour to match the seat

Body finish:

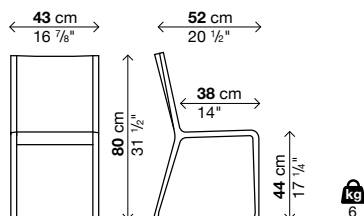
White polypropylene (PP01)

Red polypropylene (PP02)

Black polypropylene (PP03)

Code	Body	Legs	Vol.
05BKA01	polypropylene	colour to match the seat polished aluminium	0.30

2 chairs in each package



Bikappa padded

Designed by Bartoli Studio

The subtle elegance of Bikappa comes with extra comfort and prestige, in this option with padded back and seat in expanded polyurethane, upholstered in Deploeg® fabrics, in a variety of colours, or in soft synthetic leather. The sides, as for the unpadded option, are in light and resistant polished pressure die-cast aluminium, or in white, black or red lacquer. As the design of the chair is so minimalist, its upholstery cannot be removed, however, it is particularly resistant to dirt and easy to clean, thanks to its top-quality materials.

Metal finish:

Polished aluminium

Aluminium with white lacquer

Aluminium lacquered red

Aluminium with black lacquer

Finish of cover:

STAVANGER (De Ploeg®) fabric

EXTREMA/AU (Flukso®) synthetic leather

Code	Legs	Cover	Vol.
05BKA02	lacquered	STAVANGER fabric synthetic leather	0.30
05BKA02	polished aluminium	STAVANGER fabric synthetic leather	0.30

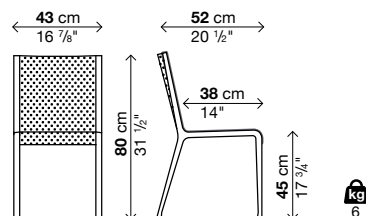
2 chairs in each package

Information about fabrics

STAVANGER fabric: 100% polyester - Trevira CS

de ploeg:

EXTREMA/AU synthetic leather: 63% polyurethane 37% cotton



Bikappa in hide

Designed by Bartoli Studio

The refined, minimalist elegance of Bikappa is enhanced with the warm appeal of fine craftsmanship for this new version upholstered in hide and directly fitted to the frame, fastened with stitching and a zip on the lower part of the seat. A layer of polyurethane foam has been inserted under the upholstery, which surrounds the body with soft ergonomic comfort. The hide upholstery is available in 12 colours or in a natural "full-grain" or black version. The frame is in aluminium with a polished finish, or white or black lacquer finish.

Metal finish:

Polished aluminium

Aluminium with white lacquer

Aluminium with black lacquer

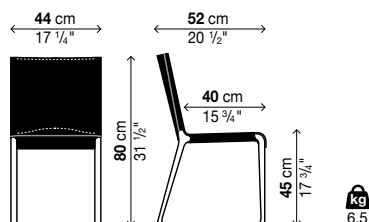
Finish of cover:

Hide (C1 → C12)

"Full-grain" hide (natural or black)

Code	Legs	Cover	Vol.
05BKA05	lacquered	hide C1 → C12	0.30
	polished aluminium	hide C1 → C12	
05BKA05	lacquered	"full-grain" hide	0.30
	polished aluminium	"full-grain" hide	

2 chairs in each package



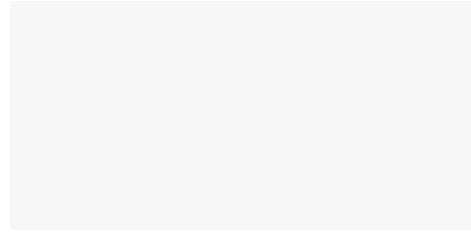
Finishes

Finiture metallo

Metal finish / Metallausführungen / Acabados metal / Finitions métal



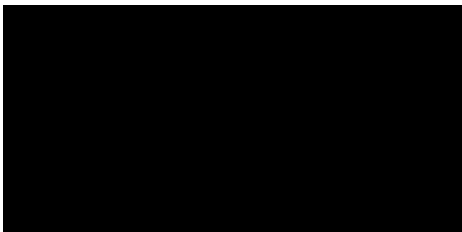
Alluminio lucidato / Polished aluminium / Aluminium glänzend /
Aluminio pulido / Aluminium poli



Bianco / White / Weiß / Blanco / Blanc



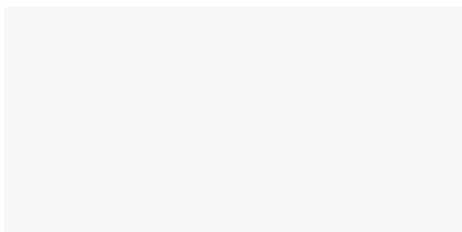
Rosso / Red / Rot / Rojo / Rouge



Nero / Black / Schwarz / Negro / Noir

Finiture polipropilene

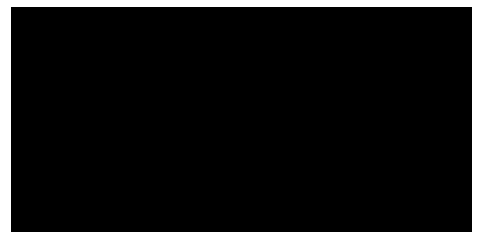
Polypropylene finishes / Ausführung Polypropylen / Acabados polipropileno / Finitions polypropylène



PP1 Bianco / White / Weiß / Blanco / Blanc



PP2 Rosso / Red / Rot / Rojo / Rouge



PP3 Nero / Black / Schwarz / Negro / Noir

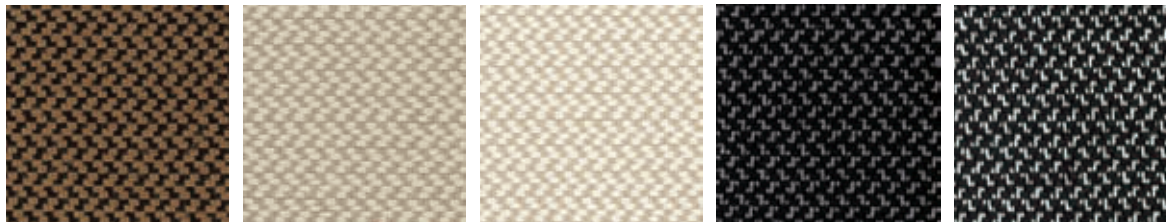
Finishes

Finiture tessuto "Stavanger"

"Stavanger" fabric finishes / Ausführungen Stoff "Stavanger" / Acabados Tejido "Stavanger" / Finitions Tissu "Stavanger"

100% PE - Trevira CS

de ploeg:



43 / 77

48 / 91

50 / 93

59 / 80

60 / 98

Finiture pelle sintetica "Extrema/AU"

"Extrema/AU" synthetic leather finishes / Ausführungen "Extrema/AU" / Acabados "Extrema/AU" / Finitions "Extrema/AU"

63% polyurethane - 37% cotton



150

450

850

1350

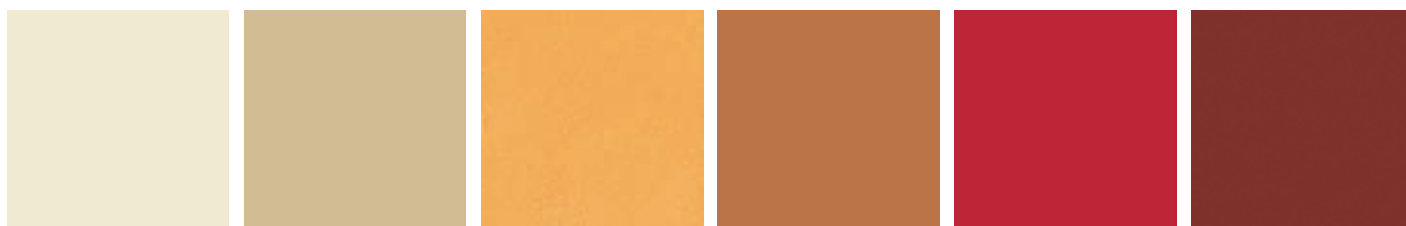
2150

2250

Finishes

Finiture cuoio

Hide finishes / Ausführungen Kernleder / Acabados cuero / Finitions cuir



C1

C2

C3

C4

C5

C6



C7

C8

C9

C10

C11

C12

Finiture cuoio "pieno fiore"

"Full-grain" hide finishes / Ausführungen des "vollnarbigen" Leders / Acabados cuero "plena flor" / Finitions Cuir "pleine fleur"



F1 Naturale / Natural / Natur / Natural / Naturel

F2 Nero / Black / Schwarz / Negro / Noir